



Image Analysis Software

Client Overview

The client is an enterprise image intelligence organization for analyzing and interpreting images on every scale, from microscopic cell structures to full body scans. The company helps customers to extract intelligence from images, delivering deeper insights, faster results and better decisions. It has a huge range of applications that can be applied in every industry where image analysis is critical, although the primary focus is on Medical Imaging and Life Sciences.

Challenges

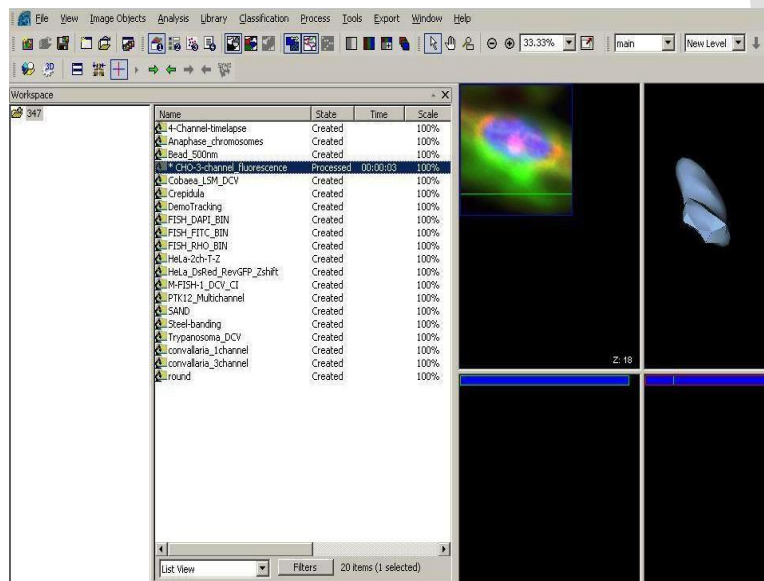
Imaging has become an essential component in many fields of bio-medical research, life science and clinical practices. Medical imaging is a major tool for rapid diagnosis of a disease with visualization and quantitative assessment. The analysis of diverse types of images requires sophisticated computerized quantification and visualization tools. The client required multidimensional image analysis software for life science and biomedical images consisting of various image driver modules.

Solutions

Optra Systems helped the client to develop a powerful and integrated tool for biomedical and life science image analysis.

- It is a comprehensive application for the complete image development process from rapid prototyping to deployment of fully automated image analysis routines.

- The application enables image analysis from any modality, in any dimension, from basic research to clinical diagnostics.
- Proprietary image file drivers developed like SVS, ZVI, LIF, ANALYZE, AVW, FLEX etc. allow image viewing operations, metadata viewing and running of image processing algorithms on image data.
- As required by the client drivers were developed for both Linux and Windows platforms.



Benefits

- Accurate, robust and fully quantified results were achieved for any size, modality or format of image, including 3D features.
- Application is easy to use and can be adapted to any image analysis workflow.
- The application can be used to analyze and correlate image information across different scenarios ranging from drug development to radiology imaging.

Technologies

- C++, Intel IPP libraries.

OptraHealth LLC.

530 Lakeside Drive, Ste 250, Sunnyvale, CA 94085

Tel: +1-408-524-5300, Fax: +1-408-524-5302, Email: info@optrahealth.com

About Optra Health

Optra Health is an ISO-certified global organization with deep domain expertise in medical devices, lab automation, life science informatics and healthcare IT solutions. The company provides a fully-scalable, cost-effective OptiShore™ delivery model. This enables customers to choose the optimal balance between on-site, on-shore, and off-shore development that will best address their budget and collaboration requirements. With Optra Health, customers are able to shrink their time-to-market by leveraging practical, building-block based solutions. Committed to clear communication and total transparency, the company consistently meets or exceeds its clients' expectations. Offering a full complement of expert engineering and consulting services, Optra Health is aligned to real business needs applied over the entire product development lifecycle. The robust, scalable and efficient IT infrastructure of the company, together with its outstanding project management team, consistently ensures superior results. Optra Health's global delivery model helps its customers cut costs by about 50% without compromising on quality and realize a 200% improved production cycle. Visit Optra Health today: <http://www.optrahealth.com>

Contact Optra Health Today

OptraHealth LLC.

530 Lakeside Drive, Ste 250

Sunnyvale, CA 94085

Tel: +1-408-524-5300; Fax: +1-408-524-5302

Email: info@optrahealth.com

OptraHealth LLC.

530 Lakeside Drive, Ste 250, Sunnyvale, CA 94085

Tel: +1-408-524-5300, Fax: +1-408-524-5302, Email: info@optrahealth.com